

Accessing GWI Data Files with Windows 8 64-bit OS

Background:

The 64-bit version of Windows 8 includes a technology called File and Registry Virtualization (FARV). This serves to make Windows more secure. It impacts applications such as Global Water's Global Logger, Global Access, and Global DO because it automatically redirects the saving of files away from the expected "program files" subfolder into one of several other virtual locations. This can lead to confusion when the GWI application user attempts to locate and copy data or configuration files for use within other applications.

This does not impact file access from within the GWI app itself at all; it only matters when, for instance, trying to locate a sample history file saved via Global Logger for import into a spreadsheet or data system.

For more details on Windows FARV, refer to
http://blogs.technet.com/b/richard_macdonald/archive/2007/05/18/990366.aspx
or to
<http://support.microsoft.com/kb/927387>.

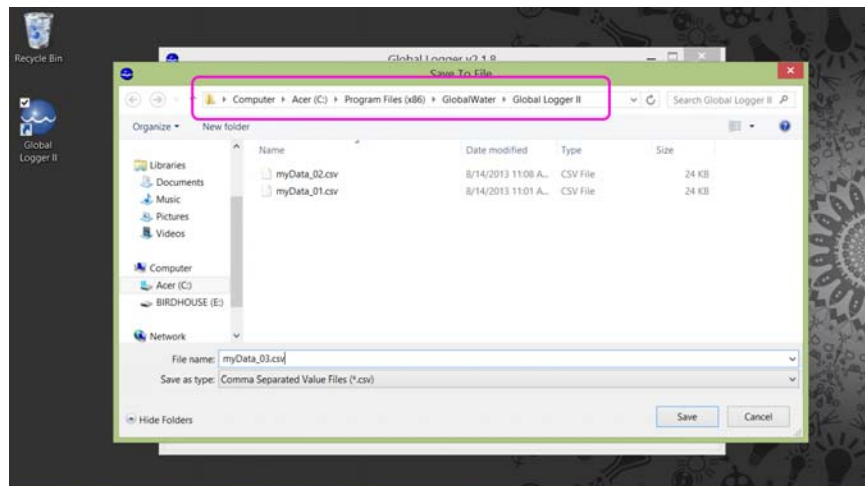
FARV effect on Windows 8 32-bit OS:

This issue does not apply to 32-bit versions of the Windows operating system.

FARV effect on Windows 8 64-bit OS:

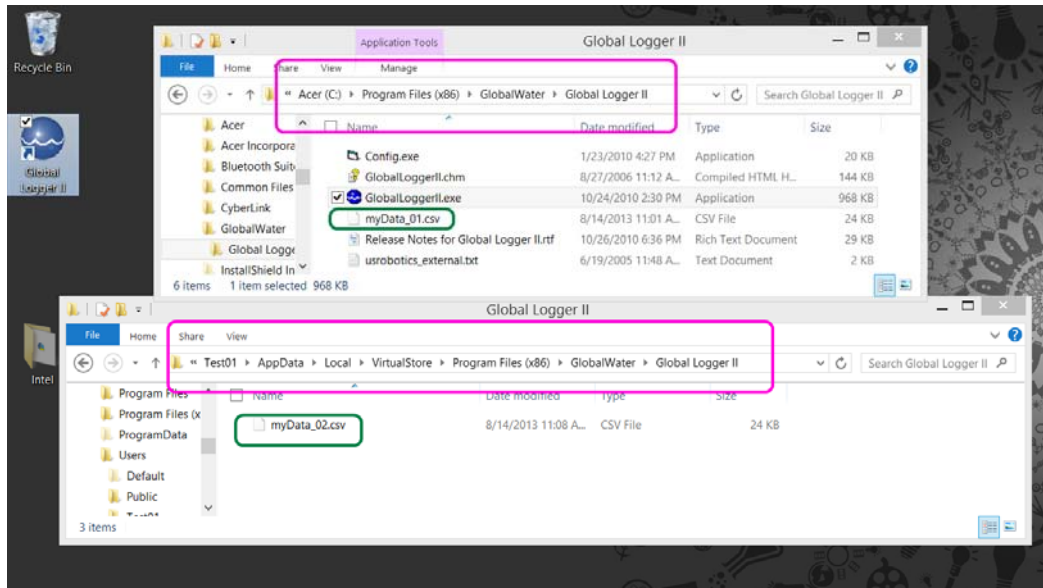
The default behavior for Windows 8 64-bit is to redirect file and registry operations from within a 32-bit application to what are known as the "VirtualStore" folders and registry hives. This means that the Global Logger application may appear to be saving data files to "C:\Program Files (x86)\Global Water\Global Logger II", **but the files actually are stored elsewhere.**

In the example below, notice that the **Get History | Save To File** dialog from within the Global Logger II app shows the file storage path (circled in pink) as "C:\Program Files (x86)\GlobalWater\Global Logger II" when saving a data file. This screen makes it appear that 2 data files have been saved locally in this directory.



Accessing GWI Data Files with Windows 8 64-bit OS

However, when reviewing the actual folder contents using File Explorer (shown below), only one data file (“myData_01.csv”) was actually saved to the application folder, while the other data file (“myData_02.csv”) was automatically redirected to the users “Virtual Store” folder.



Note: The Virtual Store folder uses a different path for each logged-in user on the PC. In this example, the user name is “Test01” in this case.

Using “Run as Administrator” to work around the FARV behavior:

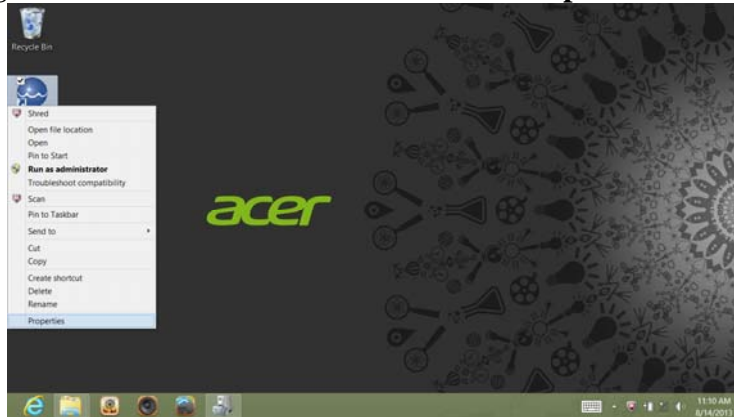
In the example above, the file “myData_02.csv” was saved while the Global Logger II program was running in normal mode, which allows the FARV to redirect the user-generated files to the Virtual Store.

However, the file “myData_01.csv” was saved while the Global Logger II program was running using the Windows “**Run as Administrator**” feature, which circumvents the FARV behavior and allows the user-generated files to go to their intended directory.

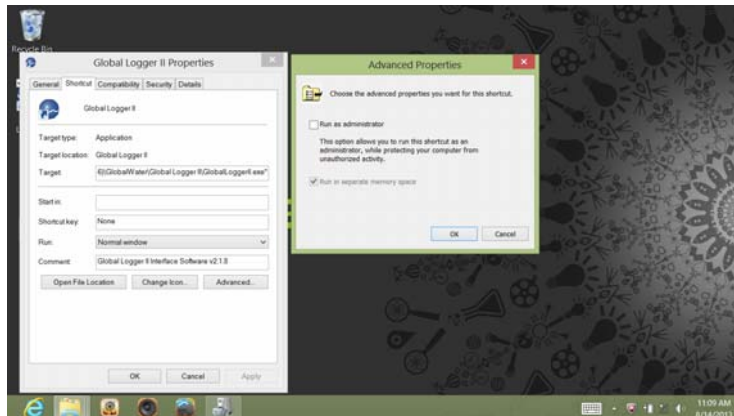
So, to bypass this FARV behavior, always run the GWI application using the “Run As Administrator” feature. To do so, change the properties on the desktop shortcut for your GWI application using the following steps:

Accessing GWI Data Files with Windows 8 64-bit OS

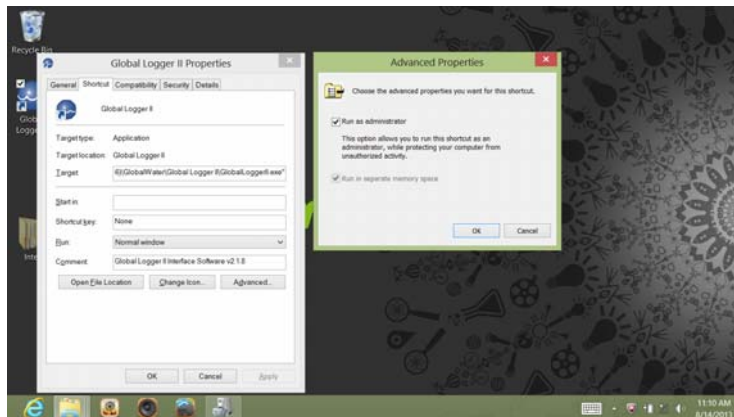
1. Right-click the shortcut icon and select “Properties”



2. Click the “Advanced” button.



3. Check the box “Run As Administrator”.



4. Click “OK” to both screens to save the changes.

Accessing GWI Data Files with Windows 8 64-bit OS

This simple change will avoid the behavior of the FARV, so long as the shortcut is always used to start the GWI program. The data and configuration files for your GWI program will now be stored in the same folder as the application binary files.